

2 0 2 4 - 2 5 M E M B E R S H I P G U I D E



RCAF

RAGIN' CAJUNS ATHLETIC FOUNDATION

RAGIN'
CAJUNS

CAJUN NATION,

Thank you for your continued support of our student-athletes and Athletics Department! Your generosity plays an important role in helping us provide an unmatched experience for Ragin' Cajun student-athletes.

We strive to position Louisiana Athletics in the national spotlight through championship athletics, and none of it would be possible without the unwavering support of our Ragin' Cajuns Athletic Foundation members.

Over the last three years, Louisiana has won 17 SBC regular season and tournament championships, NCAA Regional titles and a bowl championship, while leading the conference in community service 14,364 hours. Our success is a testament to the hard work that our student-athletes and coaches put in day in and day out and I am very excited to see what the future holds for all of our programs.

Academically, 10 of our 16 sport programs achieved a team GPA of 3.0-or-higher during the spring term (men's tennis women's tennis, soccer, women's cross country, men's cross country, softball, baseball, women's track and field, men's track and field, golf) while nine did so this past fall (men's tennis, women's cross country, golf, soccer, softball, women's tennis, women's track and field, baseball, men's cross country). Most importantly, seventy-six (76) Louisiana student-athletes earned their degrees during the 2023 calendar year.

BRYAN MAGGARD, Ph.D.
*Vice President for
Intercollegiate Athletics*



With the announcement of the Our Lady of Lourdes Stadium project as well as other facility projects in the planning phases, it is imperative we continue to grow the membership base for the RCAF. Over the last few months, the RCAF has made several key hires to help facilitate membership growth and provide unparalleled customer service to our investors.

Lastly, I couldn't be more excited about the implementation of our new ticketing team and platform, Paciolan. After our strong, long-standing partnership with the CAJUNDOME, we have brought ticketing in-house. Paciolan is the industry standard and, with the creation of the Louisiana Athletics Ticket Office, our fans will encounter a first-class gameday experience with ticketing.

I truly believe our best days are ahead! As we continue to invest in our facilities, our services, and our student-athletes, rest assure, Louisiana Athletics will approach 2024 with an attitude and mindset of improving each and every day.

On behalf of our coaches, staff, and student-athletes, THANK YOU for all you do for the Ragin' Cajuns and our amazing Carnegie R1 University.

GEAUX CAJUNS!

LOUISIANA ATHLETIC SUCCESSES

IN THE CLASSROOM, THE COMMUNITY, AND ON THE FIELD

17 Sunbelt Conference regular season and tournament championships

Led the Sun Belt Conference in community service hours for 3 consecutive years

16th in the nation in Community Service Hours performed at the Division I level, with 11 teams ranking in the Top 10 of their respective sports

9 teams achieved a semester GPA of 3.0 or higher

6 teams have an active streak of at least 10 consecutive semesters with a 3.0 or higher



IMPACT

“On behalf of the women's basketball team, I would like to extend a special thank you to the contributors of the RCAF's Champions Fund, expressing our appreciation for the support provided to help make our student-athlete experience here at UL the best it can be. Without the RCAF's generous donations, ourselves and our fellow student-athletes would not be able to achieve our goals of competing at the highest of levels. We look forward to having you bring the same love and support to the Cajundome this season as we chase our goals.”

Alicia Blanton, Women's Basketball

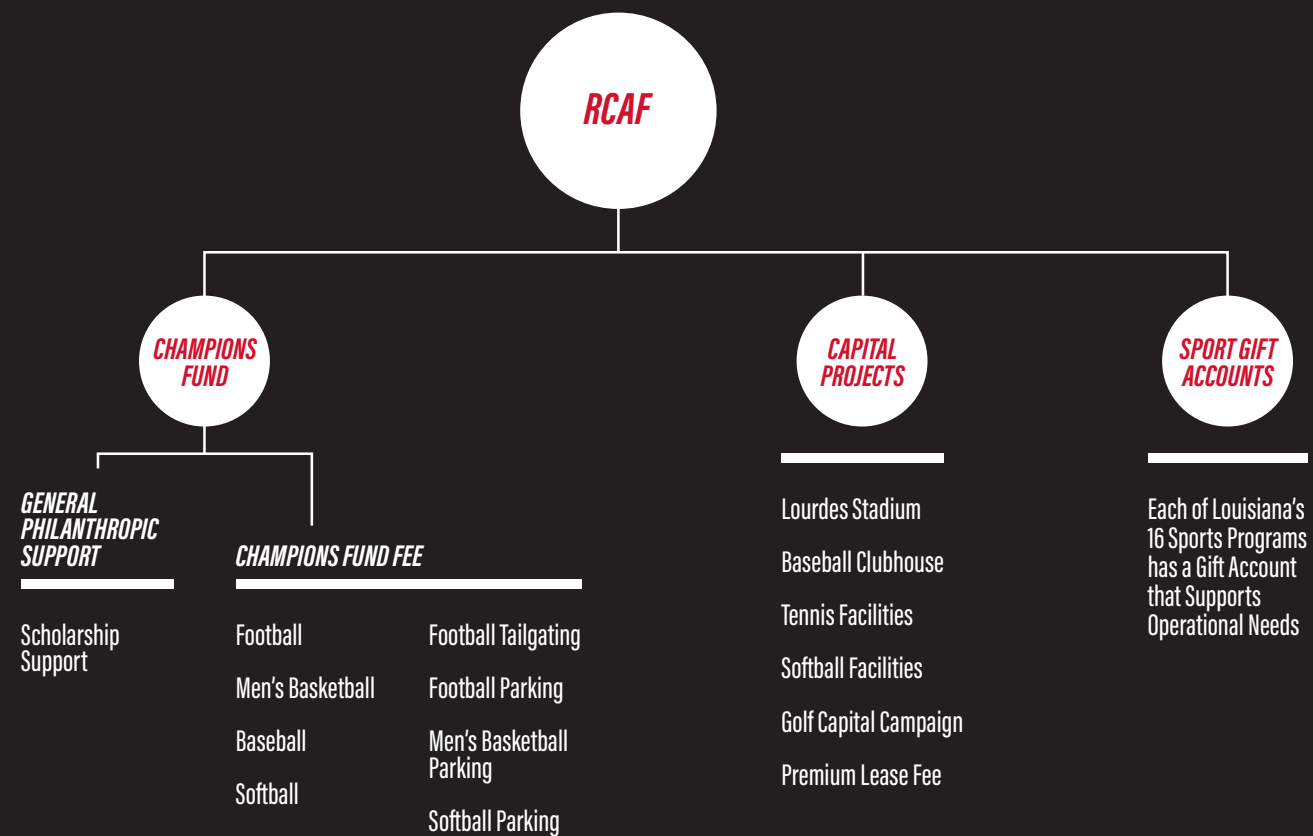
WHAT IS THE RCAF?

The Ragin' Cajuns Athletic Foundation is the official fundraising arm for Louisiana Athletics. The RCAF's mission is to build authentic relationships that provide resources to enhance the experience of Louisiana student-athletes. RCAF members assist in generating revenues for three main purposes:

- Offset annual student-athlete scholarship costs.
- Provide financial resources for capital projects such as new state-of-the-art athletic facilities or renovations that enhance existing athletic facilities.
- Enhance sport specific operating budgets.

HOW TO BECOME AN RCAF MEMBER

Any gift of \$50 or more to an area within Louisiana Athletics makes you a member of the RCAF. A minimum investment of \$50 to the RCAF Champions Fund unlocks your membership benefits and activates Investor Ranking; members can accrue Priority Points without receiving member benefits.

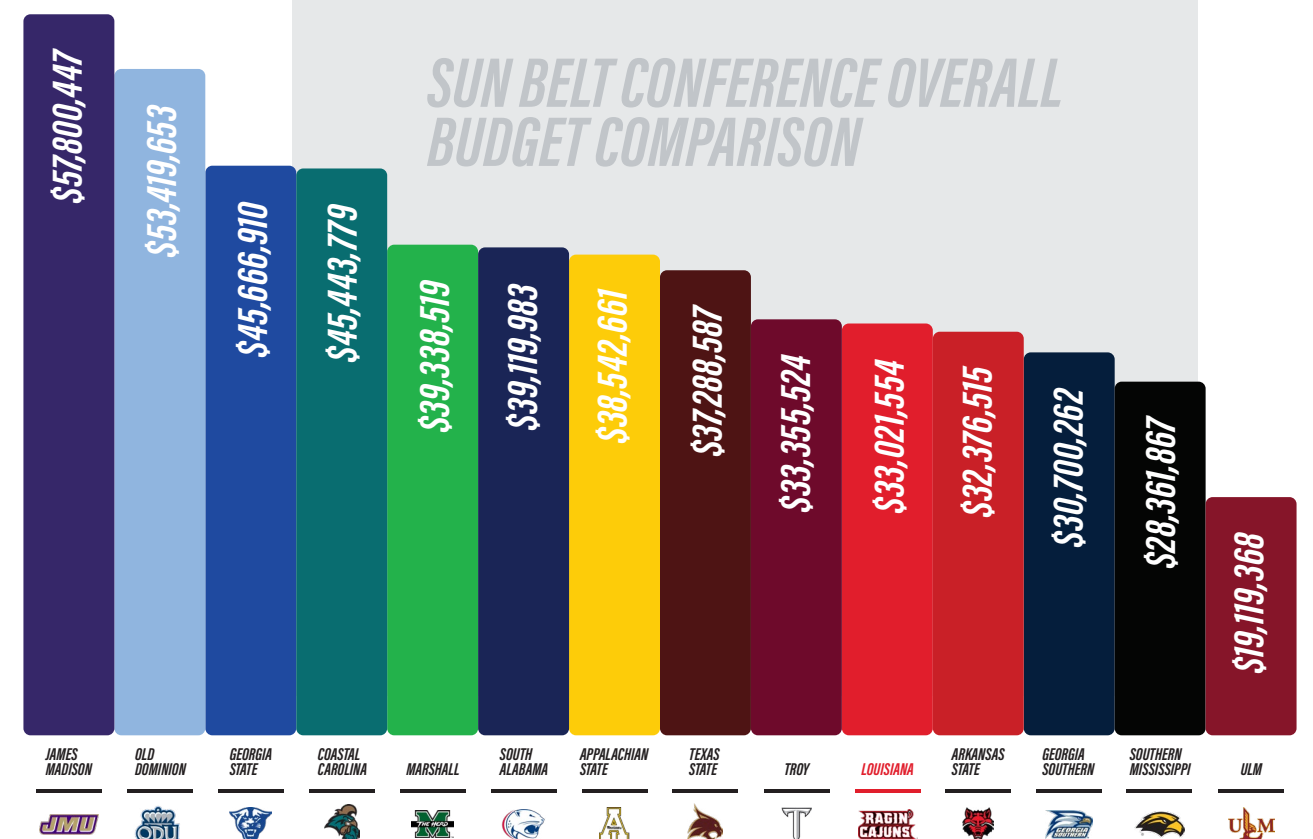


Fuel victories and opportunities for more than 400 Louisiana Athletics student-athletes. Your support is instrumental in providing scholarships, championship facilities, and an unmatched student-athlete experience.

Show your Ragin' Cajun pride today by paying it forward with a tax-deductible donation. Go above and beyond to propel the Ragin' Cajuns on to win championships!

INVEST IN CHAMPIONS

IN THE CLASSROOM, COMPETITION, AND FOR LIFE.



IMPORTANT
DATES

APRIL 30
2024 FOOTBALL PRIORITY
SEAT DEADLINE

AUGUST 30
BASKETBALL PRIORITY
SEAT DEADLINE

OCTOBER 30
BASEBALL AND SOFTBALL
PRIORITY SEAT DEADLINE



RCAF
BENEFITS

	\$50	\$100	\$250	\$500	\$1K	\$3K	\$5K	\$10K	\$15K	\$25K	\$50K	\$100K
Opportunity to Purchase Priority Seating	🏆	🏆	🏆	🏆	🏆	🏆	🏆	🏆	🏆	🏆	🏆	🏆
RCAF Membership Packet		🏆	🏆	🏆	🏆	🏆	🏆	🏆	🏆	🏆	🏆	🏆
Football Concessions Fast Pass			🏆	🏆	🏆	🏆	🏆	🏆	🏆	🏆	🏆	🏆
RCAF Teamstore Discount				🏆	🏆	🏆	🏆	🏆	🏆	🏆	🏆	🏆
RCAF Spring Game Experience					🏆	🏆	🏆	🏆	🏆	🏆	🏆	🏆
Pre-Season Social (for 2)						🏆	🏆	🏆	🏆	🏆	🏆	🏆
Invitation to Hall of Fame Banquet (for 2)							🏆	🏆	🏆	🏆	🏆	🏆
Football Pre-Game Sideline Pass (Select Games)								🏆	🏆	🏆	🏆	🏆
Adidas Sideline Apparel Item									🏆	🏆	🏆	🏆
Exclusive VIP Event with Head Coaches										🏆	🏆	🏆
Opportunity to Purchase Championship Ring											🏆	🏆
Exclusive Travel Opportunities												🏆

RCAF PRIORITY POINTS
& INVESTOR RANKING

HOW POINTS ARE
CALCULATED

Priority points are calculated based on
four criteria

1 POINT

For every \$100 given across
Louisiana Athletics

1 POINT

For every \$300 given across the
entire University

1 POINT

For each season ticket purchased

10 POINTS

For each year as an investor to the
Champions Fund

HOW INVESTOR RANKING
IS CALCULATED

Your Investor Rank is determined by your total
yearly RCAF contributions, which establishes your
Investor Level. Priority points are then used to
rank you within your Investor Level.

TOTAL INVESTMENT MODEL

The RCAF rankings and benefits are based
on a Total Investment Model. All gifts made to
Louisiana Athletics, in the current giving year,
are combined to create a Total Investment Level,
which determines Investor Rankings and benefits.

Total Investment benefits and Investor Ranking
are activated with a gift of \$50 or more to the
RCAF Champions Fund.



Haily Waterhouse
SOCCER
SOPHOMORE

TUITION & FEES
\$10,382
(IN-STATE)

\$24,110
(OUT-OF-STATE)

ROOM & BOARD
\$10,990

COST OF
ATTENDANCE
\$5,180

BOOKS
\$800

NUTRITION PROGRAM
\$2,500

ATHLETIC
PERFORMANCE
\$5,307

SPORTS MEDICINE
\$3,173

ACADEMIC SUPPORT
\$1,800

CHAMPIONS FUND

Creating champions both on and off the field is a top priority for Louisiana Athletics. The RCAF Champions Fund is the main source of support in creating a first-class experience for the 400+ Ragin' Cajuns student-athletes. In order to continue to win championships, it is critical to engage with Louisiana alumni and friends to grow the base of support for the RCAF Champions Fund. The Champions Fund directly supports:

SCHOLARSHIPS STRENGTH AND CONDITIONING
NUTRITION RECRUITING
ATHLETIC MEDICINE COMPETITIVE EXCELLENCE

\$40,132

AVERAGE ANNUAL COST PER IN-STATE
SCHOLARSHIP STUDENT-ATHLETE
OUT-OF-STATE — \$53,860



Starting with the 2024 Louisiana Football season, all Louisiana Athletics programs will have a single season ticket price with a Champions Fund Fee based on seat location. All Champions Fund Fees will count toward fans' total annual RCAF Champions Fund contribution, which determines additional benefits like parking and tailgating locations.

FOOTBALL PRIORITY SEATING

Season ticket holders will undergo a reseating for the 2024 and 2025 seasons. Due to the construction taking place for the renovation of Our Lady of Lourdes Stadium, there will be no seating on the west side of the stadium available for the 2024 season. The newly renovated west side will open for the 2025 season.

2024 ORDER OF SELECTION

To reward both loyalty and generosity, the Louisiana Athletics Department has created the following allocation process so that Ragin' Cajuns fans have the opportunity to secure the best seats possible for the 2024 season. Within each group, the order will be determined based upon the RCAF Total Investment Model Ranking system for the 2024-25 giving year. To be an active RCAF member for the 2024-25 giving year, fans must contribute \$50 or more to any RCAF fund.

Priority points and donor rank will include all support towards the RCAF completed by April 30, 2024.

GROUP 1: CAPITAL PROJECT DONORS

- \$25,000+ paid or pledged and on time with payments to one of the following projects:
 - Lourdes Stadium, EK Long, Baseball Clubhouse, Tennis Complex, Softball Renovations, Golf Short Game Practice Area

GROUP 2: ACTIVE 2024-25 RCAF MEMBERS THAT WERE 2023 FOOTBALL SEASON TICKET HOLDERS

GROUP 3: REMAINING 2024-25 RCAF MEMBERS

GROUP 4: REMAINING 2023 FOOTBALL SEASON TICKET HOLDERS

Group 4 will go on priority points earned for purchasing season tickets. Group 5 will go on date of purchase from oldest to newest.

On April 30, 2024 at midnight all priority points will freeze, fans will be categorized by the groups described previously, and then ranked within each group based upon their RCAF Total Investment Model Ranking.

The RCAF will then assign you a selection window based upon your ranking. On May 15, 2024 at 9 AM fans in Group 1, ranked 1-50 will have the opportunity to login to their Cajuns Account and

pick their seating for the 2024 season. They will have until 1 PM on May 15 until the map opens up to those ranked 51 – 100, who will have until 9 am on May 16 until the next group is given access for selections. The process will continue until all fans have had the opportunity to select their seats for the 2024 Louisiana Football season. All ticket payments and remaining required Champions Fund fees will be due at the time purchase.

3 WAYS TO SELECT YOUR SEATS

ONLINE

By Logging into your Cajuns Account.

BY PHONE

During your appointed time slot, please call the Louisiana Athletics Ticket Office at (337) 482-GoUL (4685) and a representative will be happy to assist in the selection process.

IN PERSON

Members of the Louisiana Athletics Ticket Office and the RCAF will be available in the Russo Park Stadium Club to assist any fans who would like to come in person to select their seats for the upcoming year. Please only come during your appointed timeslot.

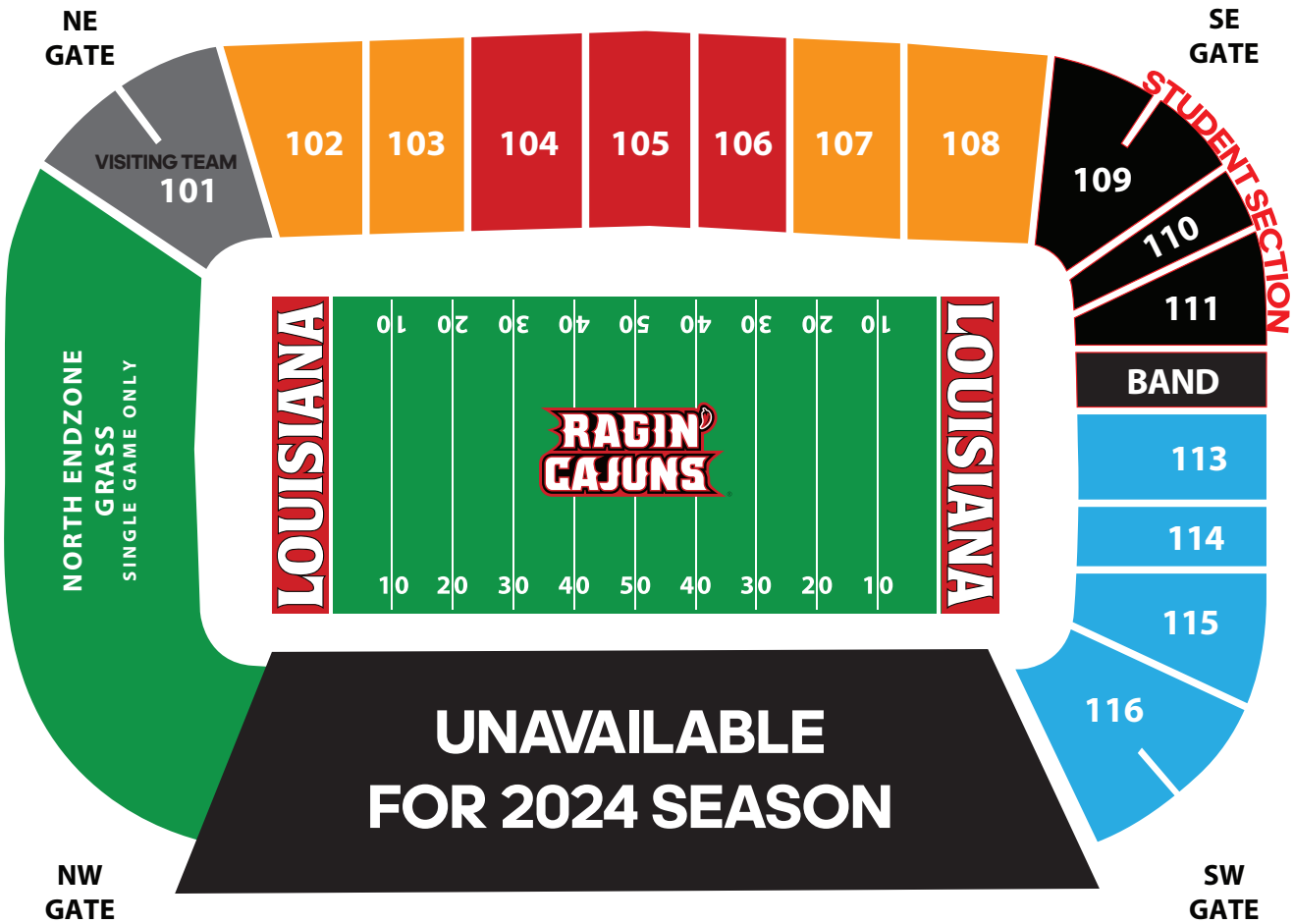
SEATING & PARKING

2024 LOUISIANA FOOTBALL



SEATING

	Ticket	Champions Fund Fee	Total Cost		
Sections 104, 105, 106	\$125	\$125	\$250	Section 101	Visiting Team
Sections 102-103, 107-108	\$125	\$75	\$200	Sections 109-112	Student Section and Band
Sections 113-116	\$125	—	\$125		



PARKING

	Champions Fund Level Minimum	Price Per Pass
Lagniappe	\$15,000	\$60
Lot B	\$3,000	\$60
Lot C	\$500	\$60
Lot D	\$300	\$60
Lot E	\$250	\$60

TAILGATING

	Champions Fund Level Minimum	Price Per Pass
RV Lot	\$2,000	\$200
TG1	\$1,000	\$200
TG2	\$1,000	\$200
TG3	\$500	\$200
TG4	\$250	\$200

TG and RV Spaces – Max 2 per Account



SEATING & PARKING

2023-24 LOUISIANA MEN'S BASKETBALL

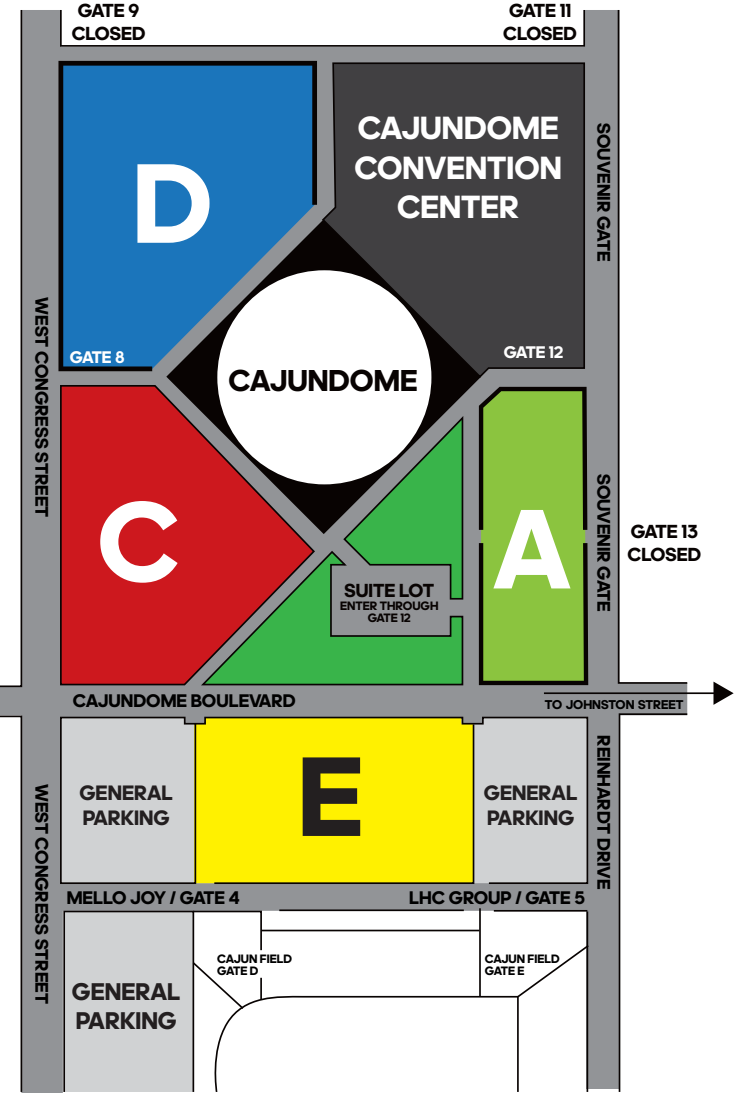


SEATING

	Ticket	Champions Fund Fee	Total Cost
Green	\$100	\$1900	\$2000
Blue	\$100	\$400	\$500
Red	\$100	\$200	\$300
Grey	\$100	\$100	\$200
Yellow	\$100	—	\$100

PARKING

	Total Season Price	Champions Fund Minimum
Lot A	\$60	\$5,000
Lot C	\$60	\$1,000
Lot D	\$60	\$250
Lot E	\$60	\$100



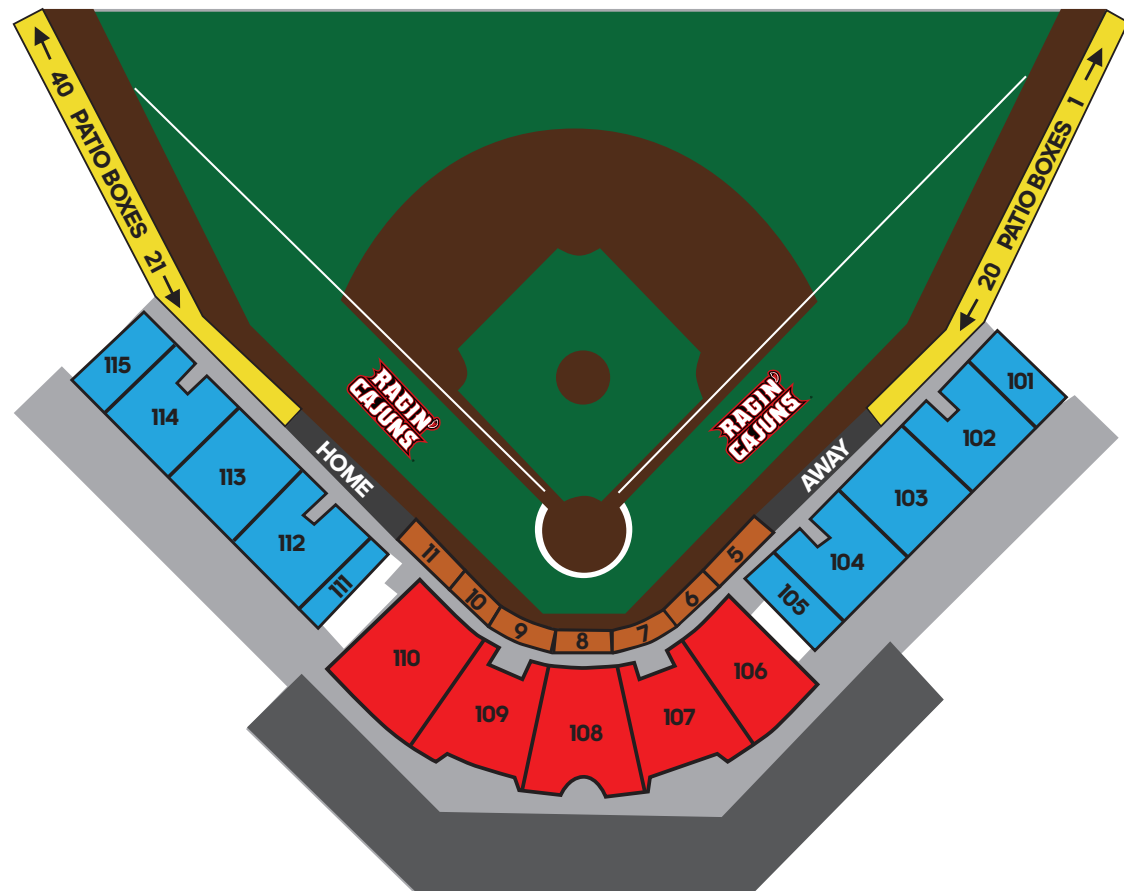
AUGUST 30
BASKETBALL PRIORITY
SEAT DEADLINE



SEATING
2024 LOUISIANA
BASEBALL

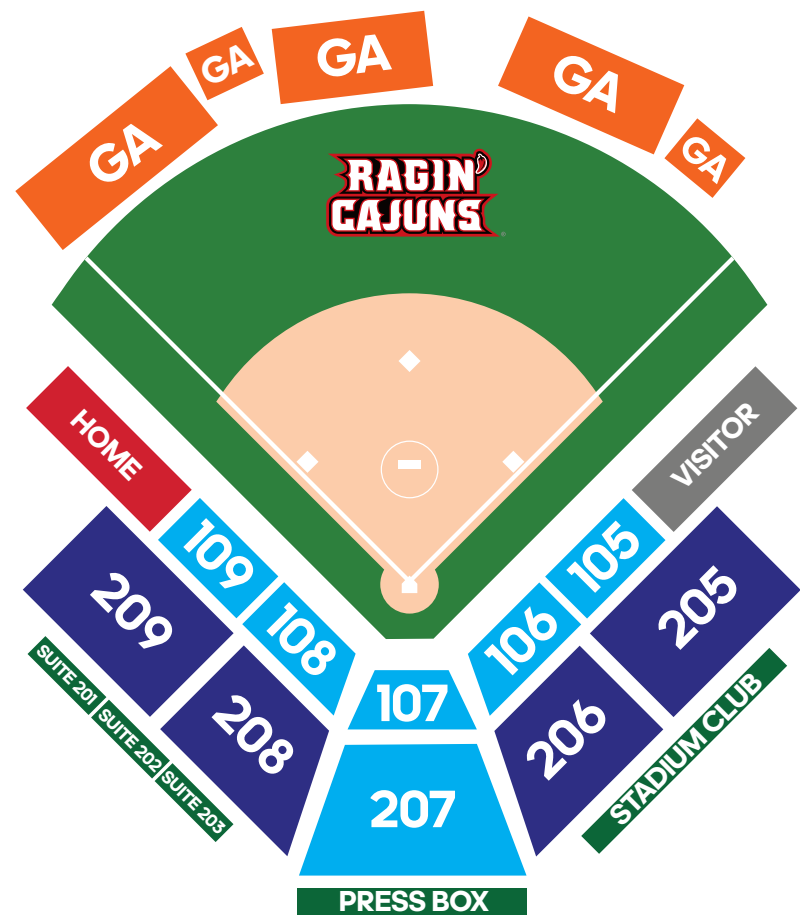


SEATING
2024 LOUISIANA
SOFTBALL



	Ticket	Champions Fund Fee	Total Cost
Orange	\$150	\$600	\$750
Red	\$150	\$250	\$400
Blue	\$150	\$100	\$250

OCTOBER 30
BASEBALL PRIORITY
SEAT DEADLINE



	Seat Location	Ticket	Champions Fund Fee	Total Cost
Blue	Grandstand Chairbacks	\$100	\$250	\$350
Dark Blue	Grandstand Bleacherbacks	\$100	\$200	\$300
Orange	General Admission Outfield	\$100	—	\$100

OCTOBER 30
SOFTBALL PRIORITY
SEAT DEADLINE

LOUISIANA MEN'S BASKETBALL

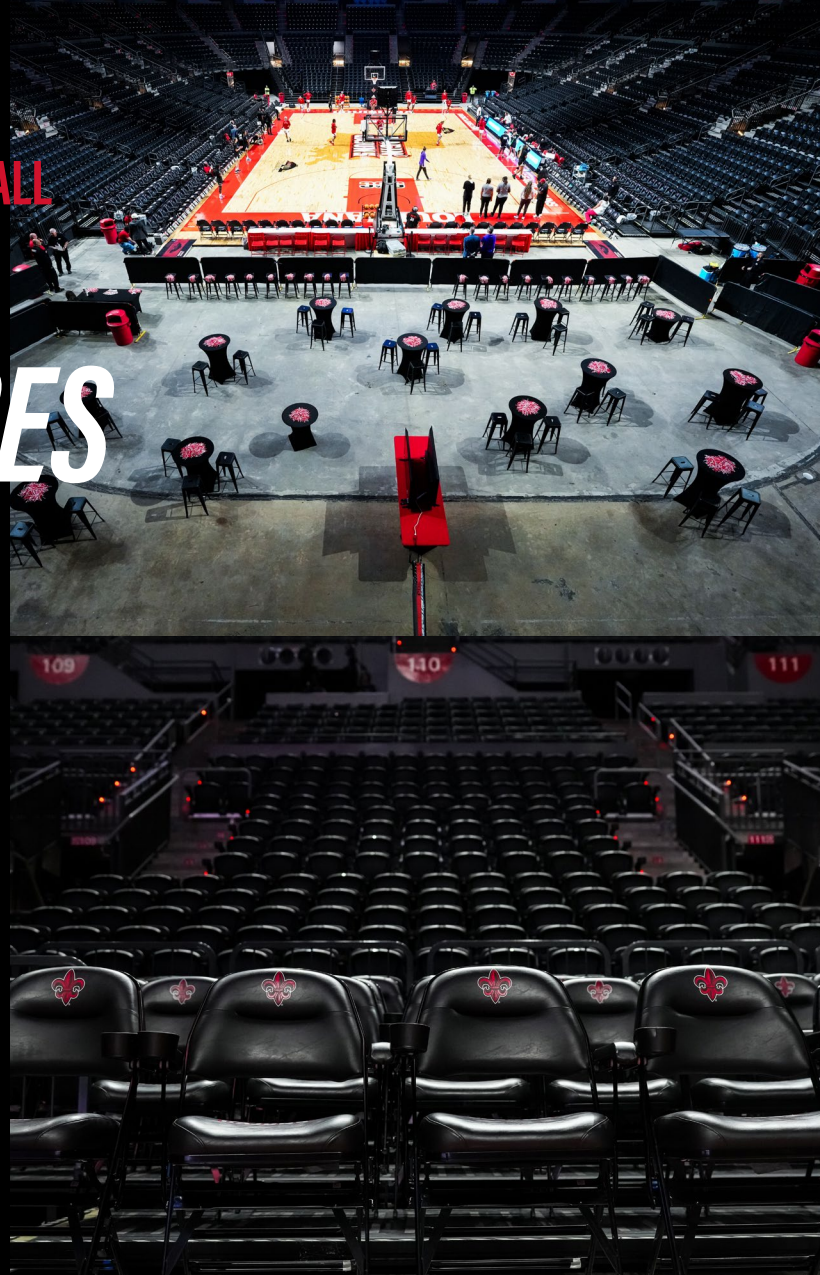
PREMIUM EXPERIENCES

COURTSIDE SEATS

Feel the energy and action up close in courtside seats! With seating right next to the court, you'll be part of the game. Courtside ticket holders have access to the exclusive Courtside Club.

COURTSIDE CLUB

The Courtside Club offers a luxury experience with court level views and provides an exciting and thrilling atmosphere throughout each home game. This exclusive area opens one hour prior to tipoff and offers all-inclusive food, non-alcoholic beverages, snacks, popcorn, and a premium cash bar. The Courtside Club is available to season ticket holders only.

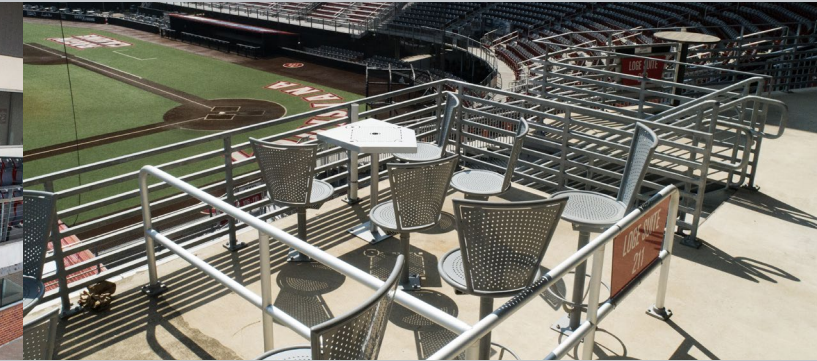


LOUISIANA BASEBALL

PREMIUM EXPERIENCES

STADIUM CLUB

Stadium club located on the upper level concourse behind home plate. Members receive complimentary popcorn and 7th inning snacks, while also having access to an exclusive cash bar and buffet.



SUITES

Located on the press box level between first and third base, each suite offers 12 outdoor seats and 4 indoor seats, plus 2 standing room only tickets.

- Outdoor Seating
- Indoor Lounge
- Catering Service (additional charge)
- 4 Parking Passes

LOGE BOX

Located on the second level down the first base line and third base line.

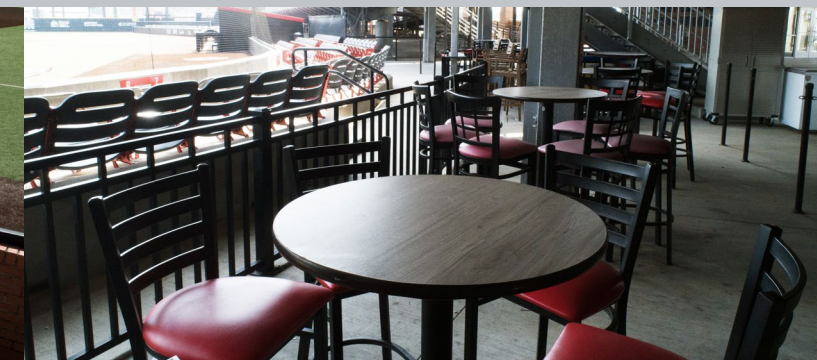
- Outdoor Seating
- Access to Stadium Club
- Cash Bar
- 2 Parking Passes



LOUISIANA SOFTBALL

PREMIUM EXPERIENCES

An indoor club located on the 2nd level concourse behind home plate. Access to this club is only available to Lagniappe Club members. Members receive complimentary in-game food and beverage.



PATIO BOX

Located on the field level down the first base line and third base line.

- Outdoor Seating
- Access to Stadium Club
- Cash Bar
- 2 Parking Passes

HOME PLATE BOX

Located on the concourse level behind home plate.

- Outdoor Seating
- Access to Stadium Club
- Cash Bar
- 2 Parking Passes

LOUISIANA FOOTBALL CAPITAL PROJECT

OUR LADY OF LOURDES STADIUM



THE RENOVATION OF OUR LADY OF LOURDES STADIUM (PREVIOUSLY CAJUN FIELD) WILL BE THE MOST SIGNIFICANT IMPROVEMENT MADE TO THE FACILITY SINCE ITS INCEPTION IN 1971.

The west grandstands will be completely revitalized and create an incredible, modern gameday experience that embraces the rich history of festivity within the Cajun culture. With the renovation planned to be completed for the 2025 Louisiana Football season, Our Lady of Lourdes Stadium will be the place to be in Acadiana for many years to come!

Preliminary Renderings,
Subject to Change

30,000+
TOTAL CAPACITY

34
SUITES

40
LOGE
BOXES

5 NEW
LOWER BOWL
CHAIR BACK
SECTIONS

524
CLUB SEATS

Preliminary Renderings,
Subject to Change



LOUISIANA FOOTBALL PREMIUM EXPERIENCES



LUXURY SUITES
Located on the third floor of the west tower, Luxury suite holders enjoy some of the best views of the game with their private conditioned space. Perfect for large families or community groups looking to have a one-of-a-kind experience when watching the Cajuns battle on the field. Luxury suites come with up to 20 tickets, food and beverage service, and access to the McElligott Club.

VERMILION SUITES
With finishes and amenities like the Founders Suites, Vermilion suites are for anyone that always let the good times roll. Located on the McElligott Club Level, Vermilion Suite holders will have their own private space for up to 20 tickets, a patio lounge that extends from their indoor conditioned space and direct access to the club when leaving their suite.

FOUNDERS SUITES
A suite experience unlike any other in college football. Right above the lower bowl seating and as close to the action as possible, Founders suite holders will have their own private space for up to 20 tickets, and a lounge only accessible to other suite holders in their pod that includes bar service, private restrooms, and individual conditioned spaces.

McELLIIGOT CLUB
McElligott Club seat holders will have an individual chairback seat located on the second level of the new west tower. Beyond having some of the best views of the game, club seat holders will have access to the indoor club space with a complimentary meal, cash bar, and private restrooms.

LEDGE SEATING
Located on McElligott Club level, ledge box holders will have a private space for two or four fans that includes a tabletop, access to the McElligott Club, and some of the best views of the game in the stadium.

LOGE SEATING
Located on both the lower concourse and McElligott Club, loge box holders will have a private space for four or six fans that includes a tabletop, access to the McElligott Club, and some of the best views of the game in the stadium.

Preliminary Renderings, Subject to Change



LOUISIANA BASEBALL CAPITAL PROJECT

BASEBALL CLUB HOUSE

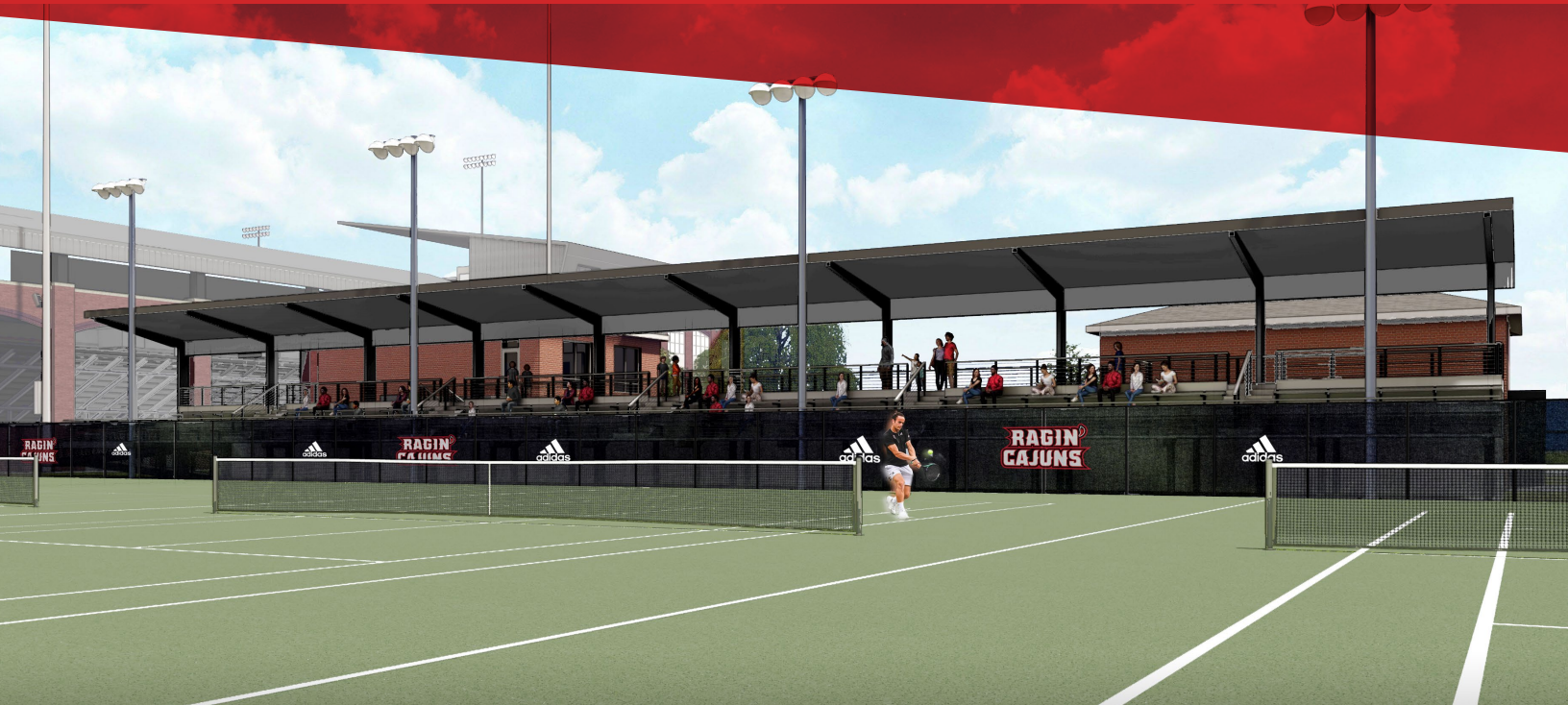
M.L. “Tigue” Moore Field at Russo Park is one of the premier baseball facilities in the country, serving as the home of the Louisiana Ragin’ Cajuns since 1978. Recently renovated, the park now provides an extraordinary gameday experience for Cajun fans. UL Athletics’ commitment to excellence extends beyond the spectators, and it is important to provide a first-class environment for Louisiana baseball players and coaches. These enhanced facilities, including cutting-edge indoor hitting and pitching bays, player locker rooms and lounges, and coaches’ offices, will give Cajuns Baseball a competitive advantage in recruiting and retention of the top talent in the state and beyond.

LOUISIANA SOFTBALL CAPITAL PROJECT

SOFTBALL IMPROVEMENTS

Lamson Park stands as a testament to the unwavering dedication to excellence UL Athletics has made to softball. Since 1985, it has been the proud home of the Cajuns Softball program, continuously evolving to reach its current state of excellence. Renowned for its rich history and captivating beauty, Lamson Park has hosted prestigious tournaments and undergone renovations that prioritize the fan experience. The forthcoming upgrades will provide the UL Softball team with enhanced player amenities, including a state-of-the-art locker room and an inviting lounge for team bonding. Lamson Park remains a symbol of the commitment to creating a top-tier facility that inspires pride and fosters competitive achievement.

Preliminary Rendering, Subject to Change



LOUISIANA TENNIS *CAPITAL PROJECT*



TENNIS RENOVATION

Cajun Courts, the home of Louisiana's Ragin' Cajuns men's and women's tennis programs, enters its 38th season as the venue for both programs. Looking to the future, the forthcoming upgrades to the tennis facility will further enhance the experience for UL Tennis student-athletes and fans. The enhancements will include new grandstands, creating an enhanced viewing experience, along with new courts and renovations to the Culotta Tennis Center, ensuring that Cajuns student-athletes and coaches have access to the finest facilities as they strive to create a championship experience.

LOUISIANA GOLF *CAPITAL PROJECT*

GOLF RENOVATION

Fundraising is currently underway for a state-of-the-art short game practice facility for the Ragin Cajuns' Golf Program, with renowned architect Baxter Spann at the helm. Spanning over 100,000 square feet, the facility's design includes three greens and three bunkers strategically positioned to simulate real-world challenges faced on championship courses. With an array of shot variations available, the facility aims to better prepare Louisiana Golfers for upcoming competitions, promising to elevate the standards of training and performance for the Ragin Cajuns' Golf Program.



LAGNIAPPE CLUB

RCAF Members who give \$15,000 or more to the Champions Fund are considered Lagniappe Club members. Lagniappe Club membership benefits vary based on your contribution.

	\$15,000	\$25,000	\$30,000
Club Access for Football	2 Club Passes / 1 Parking Pass	4 Club Passes / 2 Parking Passes	6 Club Passes / 3 Parking Passes
Club Access for Men's Basketball	2 Club Passes / 1 Parking Pass	4 Club Passes / 2 Parking Passes	6 Club Passes / 3 Parking Passes
Club Access for Baseball	2 Club Passes / 1 Parking Pass	4 Club Passes / 2 Parking Passes	6 Club Passes / 3 Parking Passes
Club Access for Softball	2 Club Passes / 1 Parking Pass	4 Club Passes / 2 Parking Passes	6 Club Passes / 3 Parking Passes
In-Game Recognition			
Exclusive Louisiana Athletics Experience			

FOOTBALL

Reserved Parking Space
Complimentary In-Game Food and Beverage

MEN'S BASKETBALL

Reserved Parking Space
Access to Courtside Club
Complimentary In-Game Food and Beverage

OTHER BENEFITS

In-Game Benefits (One Per Pass)
Lagniappe Club Logo Item

BASEBALL

Reserved Parking Space
Access to Stadium Club
Complimentary In-Game Food and Beverage

SOFTBALL

Reserved Parking Space
Access to Stadium Club
Complimentary In-Game Food and Beverage

METHODS OF GIVING

PAYMENT PLANS

RCAF Members can meet their desired investor level by setting up a payment plan. These payment plans can be set up by calling the RCAF office or online through Account Manager.

MAIL

Gifts can be made to the RCAF by mailing in your renewal form along with your payment information, either check or credit card. If paying by check, make payable to "RCAF".

MAILING ADDRESS

Ragin' Cajuns Athletic Foundation
PO Box 43603
Lafayette, LA 70504

MATCHING GIFTS

Some employers match charitable contributions made by their employees. Please check with your employer and submit your matching claim with your gift.

PAYROLL DEDUCTION

University of Louisiana employees are eligible to give to the RCAF through a payroll deduction payment plan. Payroll deductions can be setup through employees' ULink accounts.

GIFTS OF SECURITIES

Stocks, bonds, mutual funds, etc. are accepted and appreciated by the RCAF. These gifts typically involve publicly traded shares, such as those traded on the major exchanges and over the counter, as well as most mutual funds. Gifts of privately held stock, through more complex, are also possible.

PLANNED OR ESTATE GIFTS

Gifts in the form of life income gifts (Charitable Remainder Trust, Charitable Gift Annuity), charitable lead trusts, and/or bequests are common ways to state your intentions of leaving a future gift to Louisiana Athletics while receiving substantial income, estate, and gift tax benefits now.

OTHER WAYS TO GIVE

Gifts in the form of IRA Distributions, donor advised funds, or private foundation support are great ways to support Louisiana Athletics.

ONLINE

Scan QR Code to Give Now





myRCAF.ORG

337-851-RCAF (7223)

RCAF@louisiana.edu